



Sweeper & Vacuum Truck Hoses





NovaFlex 5010YG Sludge Slayer™ Hose ¼" Novawear™ YG tube

Heavy duty material handling hose designed for potable and central industrial vacuum equipment as well as truck mounted applications.

The ¼" **ultra** abrasion resistant Novawear™ YG yellow tube is designed to resist cutting, tearing and wear from abrasive media (non-oily) conveyed. This heavy helix wire is designed to resist kinking and crushing as well as provide full vacuum service. Increase your hose in those rugged applications with Sludge Slayer 5010YG Sludge Slayer is also available in the white Novawear™ WG tube. This ⅝" tube offers economy and provides very good abrasion resistance.

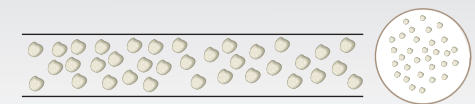
I.D."	O.D." OD"	YG OD"	Yellow Tube = YG White Tube = WG Part No.	MBR"	Vac Hg	WG Weight lbs/ft.	YG Weight lbs/ft
2½	3.61	3.38	5010WG-02500-56	10	29	3.29	2.28
3	3.11	3.88	5010WG-03000-56	12	29	3.85	2.70
4	5.12	4.87	5010WG-04000-56	16	29	5.12	3.77
6	6.95	6.89	5010WG-06000-56	24	29	6.05	5.73
8	9.11	8.98	5010WG-08000-56	36	29	8.70	8.13
10	11.17	11.05	5010WG-10000-56	48	29	11.28	10.57

Hose Wear

Abrasion is wear or undesirable removal of material from the surface of the hose tube. The degree of wear and or abrasion varies widely and is determined by some of the following factors:

- Material transferred (e.g. size, sharpness, size, distribution, hardness)
- Velocity - flow rate, turbulence
- Angle of material impact - affected by bend radius
- Slurry or dry
- Contamination elements - presence of oil or chemicals (PH value of slurry liquid)
- Temperature

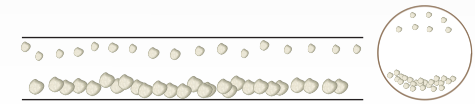
To avoid sediment settling in a hose, mixture needs to keep flowing or turbulent. Deposits on the bottom of the conveying hose reduce efficiency and may cause clogging. Depending on the proportion of liquid to solids as well as the flow rate, material may be carried along in one of the following ways:



Uniform flow of homogeneous material



Non-uniform flow - larger particles bounce along the bottom



Non-uniform flow - with stationary or sliding bed of materials

NovaFlex[®] Sweeper & Vacuum Truck Hoses

Nova-Vac[™] 5049BG Boom Hose

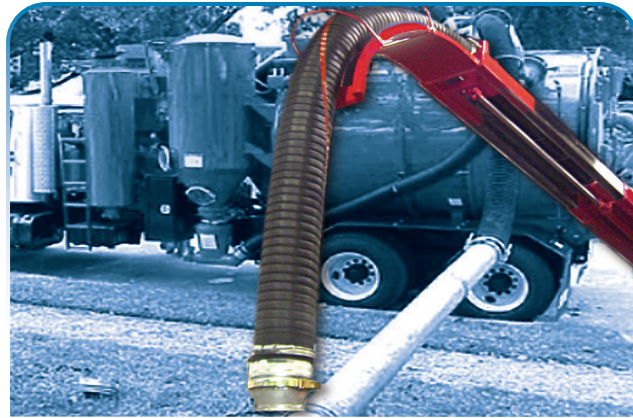
Heavy duty corrugated vacuum hose. Corrugated outer cover for ease of handling. Designed for full vacuum boom applications. Smooth inner tube for enhanced material flow. Abrasion resistant tube for extended wear.

Construction:

Tube: Black smooth abrasion resistant rubber. Available in RG and YG. Reinforcement: Helix wire and textile. Cover: Black abrasion resistant rubber. Length: Standard lengths and made to order. Temperature: -40°F (-40°C) to +160°F (+71°C)



I.D."	O.D."	Part No.	MBR"	Vac Hg	Length"	Wt lbs/ft.
2½	3.36	5049BG-02500-00	9	29	50, 100'	2.90
3	2.86	5049BG-03000-00	11	29	50, 100'	3.40
4	4.87	5049BG-04000-00	15	29	50, 100'	4.60
6	6.70	5049BG-06000-00	22	29	50, 100'	5.30
6	6.70	5049BG-06000-00-103	22	29	103"	5.30
6	6.70	5049BG-06000-00-240	22	29	240	5.30
8	8.80	5049BG-08000-00	30	29	50	7.20
8	8.80	5049BG-08000-00-060	30	29	60	7.20
8	8.80	5049BG-08000-00-062	30	29	62	7.20
8	8.80	5049BG-08000-00-66	30	29	66	7.20
8	8.80	5049BG-08000-00-72	30	29	72	7.20
8	8.80	5049BG-08000-00-103	30	29	103	7.20
8	8.80	5049BG-08000-00-120	30	29	120	7.20
8	8.80	5049BG-08000-00-127	30	29	127	7.20
8	8.80	5049BG-08000-00-240	30	29	240	7.20
10	11.11	5049BG-10000-00	60	29	20, 25, 50'	10.9



Nova-Vac[™] 5053YG Tapered Connector Sleeve

Designed to meet O.E.M.'s specifications for serviceability. This abrasion resistant smooth tube with full vacuum tapered sleeve is used to connect different size piping on vacuum truck applications for sound dampening and vibration elimination.

Construction:

Tube: Novawear[™] YG smooth abrasion resistant rubber
 Reinforcement: Helix wire and textile
 Cover: Black abrasion resistant rubber
 Length: Standard lengths and made to order
 Temperature: -40°F (-40°C) to +160°F (+71°C)

Also available in Black standard Novaware BG tube

I.D."	Part No.	Length"	Vacuum
8 x 10	5053YG-08000-00	10	29 Hg
9⅝ x 12	5053YG-09625-00	10	29 Hg
10 x 12	5053YG-10000-00	10	29 Hg



Nova-Vac[™] 5052BG Straight Connector Sleeve

Designed to meet O.E.M.'s specifications for serviceability. This abrasion resistant smooth tube and full vacuum sleeve is used to connect different size piping on vacuum truck applications for sound dampening and vibration elimination.

Construction:

Tube: Black smooth abrasion resistant rubber
 Reinforcement: Helix wire and textile
 Cover: Black abrasion resistant rubber
 Length: Standard lengths and made to order
 Temperature: -40°F (-40°C) to +160°F (+71°C)

I.D."	Part No.	Length"	Vacuum
6	5052BG-08000-98-010	10	29 Hg
8	5052BG-09625-98-010	10	29 Hg
10	5052BG-10000-98-010	10	29 Hg



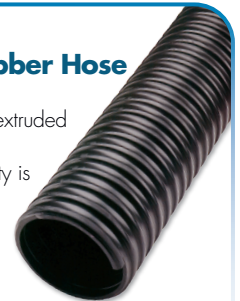
NovaFlex HDAP All Purpose Thermoplastic Rubber Hose

Heavy duty thermoplastic inner tube with fully encapsulated plastic, external wear strip. All extruded thermoplastic heavy wall hose. Designed for medium duty material handling where flexibility is paramount. Good chemical and temperature resistance with smooth interior for superior product flow.

Construction:

Material: Thermoplastic rubber
 Diameters: 2" (51 mm) to 8" (203 mm)
 Weight: 3" (76 mm) = 1.4 lbs/ft (.635k)
 Length: Diameters 2" (51 mm) to 4" (102 mm), 100ft (30.48 m) lengths;
 Diameters 5" (127 mm) to 8" (203 mm), 50ft (15.24 m) lengths
 Temperature range: -65°F (-54°C) to +160°F (+71°C)

I.D."	O.D."	Part No.	WP(psi)	Vacuum	Bend Radius	Wt./Ft.
2	2.77	9SFHDAPO2	40	29 Hg	2.5	0.97
4	4.67	9SFHDAPO4	30	29 Hg	12	1.80
6	6.85	9SFHDAPO6	30	28 Hg	18	3.50
8	8.99	9SFHDAPO8	30	27 Hg	20	5.65



Leaf and Debris / Collection Hose

Nova-Green™ Urethane Hose

A lightweight urethane alternative to cumbersome PVC hose. Designed specifically for the landscaping market. Nova-Green all urethane tube provides superior abrasion resistance and excellent flexibility. The hose features a smooth interior with a uniform .045" wall gauge for even abrasion resistance throughout. The exposed rigid helix allows the hose to drag easily across surfaces when the hose is fully charged while providing protection to the hose wall.

Applications:

Terra-seeding, Bark Blowing
Mulch Blowing

Construction:

Material: UV stabilized urethane wall, rigid plastic helix
Diameters: 2" (51 mm) to 6" (152 mm)
Lengths: 50ft (15.24) and 100ft (30.48 m)
Temperature range: -50°F (-45°C) to 200°F (+93°C)
Color: Clear wall with green helix



I.D."	Part No.	Length	WP (PSI)	Vacuum
2	9NFNOVAGREEN02	50', 100'	35	30 Hg
3	9NFNOVAGREEN03	50', 100'	30	30 Hg
4	9NFNOVAGREEN04	50', 100'	21	30 Hg
5	9NFNOVAGREEN05	50', 100'	18	23 Hg
6	9NFNOVAGREEN06	50'	16	23 Hg

NovaFlex™ TPU Heavy Duty Urethane Vacuum Hose

All extruded construction, lightweight alternative to cumbersome rubber hose. Designed specifically for transfer of abrasive materials under vacuum.

Applications:

Dewatering, material transfer and suction, debris collection

Construction:

Material: Extruded polyurethane wall, rigid PVC helix
Diameters: 4" (102 mm), 6" (152 mm), 8" (203 mm)
Weight: 6" diam. = 2.5lbs/ft
Lengths: 50 ft lengths
Temperature range: -50°F (-46°C) to +200°F (+93°C)
Colour: Extruded Transparent Blue TPU
Rated for full vacuum. Available with copper static wire



I.D."	Part No.	Length	Wall	Vacuum
4	9SFTPUX04FV	50'	0.06	29 Hg
6	9SFTPUX06FV	50'	0.06	29 Hg
8	9SFTPUX08FV	25'	0.06	25 Hg

Nova-Vac™ 5063BG Leaf / Debris Hose

Designed to meet O.E.M.'s specifications for serviceability. This highly flexible, internally and externally corrugated vacuum hose has a high abrasion resistant rubber tube with 4" (102 mm) soft cuffs on each end for easy installation.

Construction:

Tube: Black corrugated abrasion resistant rubber, RG & YG

Reinforcement: Helix wire and textile

Cover: Black corrugated abrasion resistant rubber

Temperature range: -40°C (-40°C) to 160°F (+71°C)



I.D."	Part No.	Length	Vacuum
12	5063BG-12000-00-048	48	4 Hg
12	5063BG-12000-00-100	100	4 Hg
12	5063BG-12000-00-120	120	4 Hg
12	5063BG-12000-00-144	144	4 Hg
14	5063BG-14000-00-048	48	4 Hg
14	5063BG-14000-00-100	100	4 Hg
14	5063BG-14000-00-120	120	4 Hg
14	5063BG-14000-00-144	144	4 Hg
16	5063BG-16000-00-048	48	4 Hg
16	5063BG-16000-00-100	100	4 Hg
16	5063BG-16000-00-120	120	4 Hg
16	5063BG-16000-00-144	144	4 Hg
18	5063BG-18000-00-120	120	4 Hg

NovaFlex™ SF-TPU .045 thou wall Urethane Leaf Collector Hose

An economical alternative to cumbersome rubber hose. Polyurethane wall for superior abrasion resistance.

UV stabilized for outdoor use. Lightweight, good flexibility, smooth interior for optimum flow. Encapsulated wire helix.

Applications:

Leaf collection equipment
Medium duty material handling
Plant debris collection

Construction:

Material: 0.045" translucent blue urethane, encapsulated wire
Diameters: 2" (51 mm) to 18" (457.2 mm)
Weight: 6" (152 mm) = 1.4 lbs/ft (.635 k), 8" (203 mm) = 1.9 lbs/ft (.86 k)
Lengths: Up to 8" (203 mm) diameters 25ft (7.62 m) & 50ft (15.24 m)
10" (254 mm) diameters and up 25ft (7.62 m)
Compression Ratio: 2:1
Temperature range: -65°F (-54°C) to +200°F (+93°C)
Colour: Blue with blue wear strip.

Also available in black & clear; minimum quantity required.

*Available in 0.060" gauge clear 8" (203 mm) to 14" (356 mm) diameter.

I.D."	Part No.	Length	Wall	Vacuum
6	9SFTPUW06HW	25', 50'	0.045	23 Hg
8	9SFTPUW08HW	25', 50'	0.045	13 Hg
10	9SFTPUW10HW	25'	0.045	6 Hg
12	9SFTPUW12HW	25'	0.045	5 Hg
14	9SFTPUW14HW	25'	0.045	5 Hg
16	9SFTPUW16HW	10', 12', 25'	0.045	2 Hg
18	9SFTPUW18HW	10', 12', 25'	0.045	1 Hg



NovaFlex[®] Sweeper & Vacuum Truck Hoses

Choice of Wear Resistant Material

Compound	Recommended Service
NovaWear™-TG	Very good abrasion, excellent cut and gouge resistance. Very good dry / very good wet non oily material transfer, large to small sharp material transfer
NovaWear™-WG	Very good abrasion resistance, good cut resistance for transfer of abrasive non oily food grade products, small and medium size material transfer
NovaWear™-BG	Very good abrasion, very good cut & gouge resistance - excellent dry / excellent wet non oily material transfer- large to small, sharp material transfer
NovaWear™-RG	Excellent abrasion, excellent cut & gouge resistance - excellent dry / excellent wet non oily material transfer - large to small, sharp material transfer
NovaWear™-YG	Superior abrasion, cut & gouge resistance - superior dry / superior wet non-oily material transfer - large to small, sharp material transfer

Novaflex rubber material hoses can be custom made with different tube compounds on request.

The choice of the tube compound (wear material) is dependent on the elements of the application.

Compounds are uniquely formulated to resist abrasion, cutting, ripping and other elements of wear. NovaFlex[®] utilizes the tube compounds most suited to the abrasion resistance requirements of the application being engineered. Typically, flexible material transfer hoses are designed for applications that require the adaptability to overcome bends, offsets, misalignments, expansion or contraction and vibration. Applications with bends are particularly demanding. It is important to note that the larger the bend radius engineered into a wear application, the greater the service life of the hose.

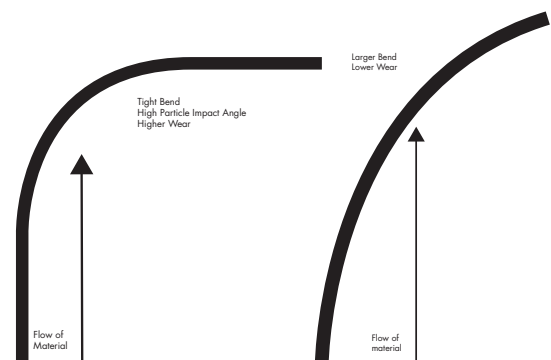
Hose wear is always on the outside radius of the hose bend. The greater the bend, the lower the angle of impact; therefore the lower the wear. To reduce wear, the optimum bend radius is ten times the inside diameter of the hose.

Hose Tube With Different Bends Depicting Particle Impact

There is a cost benefit relationship in the selection of a hose tube for a specific application. Several compounds that can service an application are available. To provide added life, the hose may require a thicker tube. All aspects should be considered; cost of hose, cost of product, hose service life and cost to install and uninstall (plant down time).

In many applications the media is constant, but in some, the media being transferred changes radically. It is always best to evaluate the product in a consistent environment. One of the more valid approaches is measuring tonnage processed. (Exclusive of differences in media conveyed.)

On new or unmonitored applications, it may be necessary to evaluate several compound types to obtain the most cost efficient product for the application. NovaFlex[®] will develop the best hose for the application.



To increase the service life of hose used in a bend; it is recommended that the hose be rotated around its axis so that the wear is more evenly distributed.



Street Sweeping Hose

Nova-Vac™ 5060 Street Sweeper Hose

Designed to meet O.E.M.'s specifications for serviceability. This highly flexible, internally and externally corrugated vacuum hose has an abrasion resistant rubber tube with 4" (102 mm) integral cuffs on each end for ease of installation. Ultra flexible and compressible construction to accommodate sweeper vacuum movements. Used for under truck installation.

Construction:

Tube: Black corrugated abrasion resistant rubber. Available in RG & YG.

Reinforcement: Helix wire with plies of fabric

Cover: Black corrugated.

Temperature range: -40°F (-40°C) to 160°F (+72°C)

I.D."	Part No.	Length	Vacuum
8	5060BG-08000-020	20"	12 Hg
8	5060BG-08000-024	24"	12 Hg
8	5060BG-08000-026	26"	12 Hg
10	5060BG-10000-020	20"	6 Hg
10	5060BG-10000-024	24"	6 Hg
10	5060BG-10000-026	26"	6 Hg
12	5060BG-12000-026	26"	4 Hg
12	5060BG-12000-030	30"	4 Hg
14	5060BG-14000-026	26"	4 Hg
14	5060BG-14000-030	30"	4 Hg



Other ID's and lengths available.

NovaFlex AGRI™ Medium Duty Thermoplastic Hose

Featuring a low profile outer helix that is easy to clamp and won't snag on corners. Chemical resistant inner tube with a molecularly bonded external wear strip for maximum durability. Smooth interior for optimum product flow.

Full vacuum to 4" diameters.

Applications:

- Medium Duty Material Handling
- Construction Dewatering
- Liquid Waste
- Septic handling and cesspool cleaning
- Agricultural Fertilizers

Construction:

Material: Thermoplastic rubber with polypropylene helix
 Diameters: 1" (25 mm) to 6" (152 mm)
 Lengths: 1" (25mm) to 4" (102 mm) diameters;
 100ft (30.48 m), 6"(152 mm) diameters up to 60ft (18.3 m)
 Color: Black with green wear strip
 Temperature range: -60° (-51°C) to +160°F (+70°C)

I.D."	Part No.	MBR"	WPSI @72°F	Vac Rating 72°F In./Hg	Wt lbs/ft.
1	9SFAGR01	2.0	50	29	0.30
1.25	9SFAGR01.04	3.0	50	29	0.47
1.5	9SFAGR01.08	3.0	50	29	0.50
2	9SFAGR02	4.5	50	29	0.71
2.5	9SFAGR02.08	5.0	50	29	0.82
3	9SFAGR03	7.5	45	29	1.20
4	9SFAGR04	11.0	40	29	1.40
6	9SFAGR06	21.0	25	28	2.09



In order to ground hose, connect helix wire to fittings that have an earthed connection.

For proper care and maintenance please see "NovaFlex® Care and Maintenance Guide form no 2003-1 (See: www.novaflex.com). Always err on the side of safety. Remove a hose from service if there is any doubt about its serviceability.

The information provided within is for informational purposes only. We have made every effort to ensure the accuracy of the provided information and assume no responsibility for any loss or damage due to errors or omissions or to the use or misuse of any information supplied. It is impossible to test all products under all conditions to which they might be subjected in the field. It is therefore the buyer and/or end users' responsibility to test all products under the conditions that duplicate the service conditions prior to installation. All improvements, all specifications are subject to change without prior notice. It is the buyer and/or end users' responsibility to review our complete [Terms and Conditions of Sale](#) located on our web sites at: www.novaflex.com | www.z-flex.com | www.flexmaster.com. Shipping terms: F.O.B. Our warehouse.

NovaFlex® Sweeper & Vacuum Truck Hoses

Vac Truck / Accessory Hoses

Yellow Jack™ Pumper Sanitation Hose

All extruded heavy wall sanitation suction hose. Unique interlock construction provides for extreme flexibility and kink resistance.

Applications:

Liquid transfer – sanitary and cesspool
Machine and tank liquid transfer
Utility suction operations

Construction:

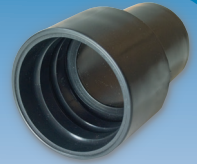
Material: EVA/Polyethylene copolymer
Diameters: 1.5"(38 mm), 2"(51 mm), 2.5"(63 mm), 3"(76 mm) and 4" (102 mm)
Bend radius: 2" (51 mm) = 3.75"(95.25mm)
Weight: 2" (51 mm)= .6 lbs/ft (.272 k)
Lengths: 1½"(38 mm) to 3" (76 mm) diameters: 10ft (3.05 m), 20ft (6.1 m), 25ft (7.62 m), 30ft (9.15 m), 50ft(15.24 m), 60ft (18.3 m).
Lengths: 4"(102 mm) diameter: 10ft (3.05 mm), 20ft (6.1 mm), 25ft (7.62 mm)
Temperature range: -40°F (-40°C) to +140°F (+60°C)
Colour: Yellow and Black
Available with factory installed cuffs or in bulk lengths



I.D."	Part No.	Length	Vacuum
1½	9NFYLJK01.08	25', 50'	29 Hg
2	9NFYLJK02	25', 50'	29 Hg
3	9NFYLJK03	3', 25'	29 Hg
4	9NFYLJK04	25'	29 Hg

Yellow Jack™ Threaded Cuffs

Threaded cuffs for use with Yellow Jack Pumper Sanitation Hose, and for use with Cam-lock couplings.



I.D."	Part No.
2	OYJCUFFTHREAD02
3	OYJCUFFTHREAD03

Yellow Jack™ Guide Kit



I.D."	Part No.
2	YJ-0200-6
3	YJ-0300-6

Double Bolt Clamps

A heavy duty clamp for the most rugged applications.



I.D."	Part No.	Hose O.D. Range
6	769	6.5" to 7.56"
8	875	8.25" to 8.87"
10	1125	10" to 11.3"
12	1360	12.25" to 14"
14	1450	14" to 16"
16	1700	16" to 17.25"

T-Bolt Clamps

For use on smooth cover hoses. Spiral Clamps; Stainless Steel.



I.D."	Part No.	Hose O.D. Range
6	STBC675L	6.3 to 6.87"
8	STBC888L	8.45 to 9"
10	STBC1088L	10.43 to 11"
12	STBC1288L	12.43 to 13"
14	STBC1488L	14.43 to 15"
16	STBC1688L	16.43 to 17"

Spiral Clamps

For use on corrugated hose covers. Viewing the end of the hose determines whether the spiral is in a clockwise or counter clockwise direction. Clockwise spirals requires a *right hand clamp*, counter clockwise requires a *left hand clamp*.



I.D."	Right Hand Spiral Clamp Part No.	Left Hand Spiral Clamp Part No.	Hose O.D. Range
6	SC600	SCC600	6.25 to 7"
8	SC800	SCC800	8.5 to 9.25"
10	SC1000	SCC1000	10.62 to 11.25"

Bridge Clamps

For use on NovaFlex ducting. The bridge clamp has a formed spacer designed to fit over the helix wire on NovaFlex, U-Lok and plastic ducts.



I.D."	Clamp Part No.
6	3BLAMP06
8	3BLAMP08
10	3BLAMP10
12	3BLAMP12
14	3BLAMP14
16	3BLAMP16
18	3BLAMP18
20	3BLAMP20



Nova-Green™ Hose for Terra Seeding, Bark and Mulch Blowing

A lightweight urethane alternative to cumbersome PVC hose designed specifically for the landscaping market. NovaFlex' s Nova-Green™ all urethane tube provides superior abrasion resistance and excellent flexibility.

NovaFlex® Hoses are suitable on OEM equipment

Vac-Con	GapVax	Vactor
Vac-Tron	Vac-All	Hi-Vac
Schwarze Industries	Johnson Sweepers	Elgin Sweepers
Keith Huber	Badger	Old Dominion Brush
SuperSucker	Camel	Supervac
Tymco	Hydrovac	

CANADA

AJAX, ON

Tel 905.686.5200
Fax 905.686.8349

MONTREAL, QC

Tel 514.697.3701
Fax 514.697.3767

CALGARY, AB

Tel 403.277.3115
Fax 403.276.1309

OTTAWA, ON

Tel 613.744.7360
Fax 613.744.7366

DELTA, BC

Tel 604.940.6401
Fax 604.940.6402

RICHMOND HILL, ON

Tel 905.731.9411
Fax 905.731.7086

U.S.A.

HAW RIVER, NC

Tel 336.578.2161
Fax 336.578.5554
Toll Free 800.334.4270

INDIANAPOLIS, IN

Tel 317.334.1444
Fax 317.334.1535
Toll Free 800.526.6288

WEST BERLIN, NJ

Tel 856.768.2275
Fax 856.768.2385
Toll Free 800.225.0215

U.K.

BROMBOROUGH, WIRRAL UK

Tel 44.0151.334.0873
Fax 44.0151.334.7145
Email: sales@novaflex.co.uk

THE
NOVAFLEX
GROUP

Email: sales@Novaflex.com
Web site: www.Novaflex.com



ver 06.2026